



# MSPSL

## Case Study

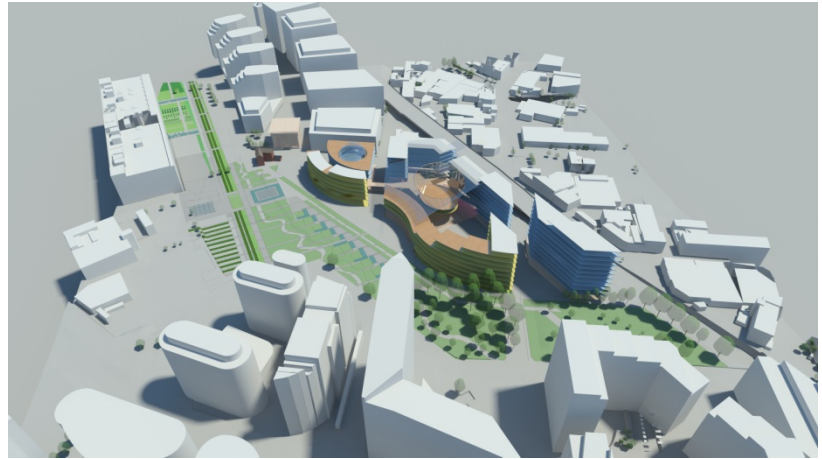
Project  
Management  
Consultancy  
Research  
Training

1 Castle Hill Court  
Castle Hill  
Rochester  
Kent ME1 1LF

t: + 44 (0) 1634 408 850  
t: + 44 (0) 1634 408 885  
f: + 44 (0) 1634 408 885  
e: mail@msspl.com  
www.msspl.com

Martin Stevens Project Services Ltd  
Registered in England No. 2616879

Registered Office: 1 Castle Hill Court  
Castle Hill Rochester Kent ME1 1LF



## New Build University Campus

Client: Birmingham City University

Role: City Centre Campus Project Director

This assignment supported a mission critical project for the University which was seeking to consolidate its operations onto 3 sites. A new campus, supported by the City Council, adjoining landowners and other developers was to be established on a brown field inner city site.

The assignment was to establish:

- The project brief
- Accommodation standards
- Reporting arrangements, protocols and procedures
- Budget and delivery programme

It was also to:

- Arrange for the preparation an outline planning application (and the necessary consultations, including liaising with CABE)
- Arrange for the preparation of an environmental impact study
- Appoint the professional team
- Recruit an internal project team and establish a project office
- Transfer the lead management role to the hybrid team

In discharging these duties, we also supported the University's Directorate establish the business case for the project; provided data in support of property acquisition and disposal and liaised with legal and property advisors; established academic and student consultation fora; provided press briefings; provided budget and cash flow data in support of funding negotiations with HEFCE, the banks etc.; established a micro web site to keep the public and students informed and to provide a feedback vehicle and established and chaired topic workshops at which all stakeholders were represented.